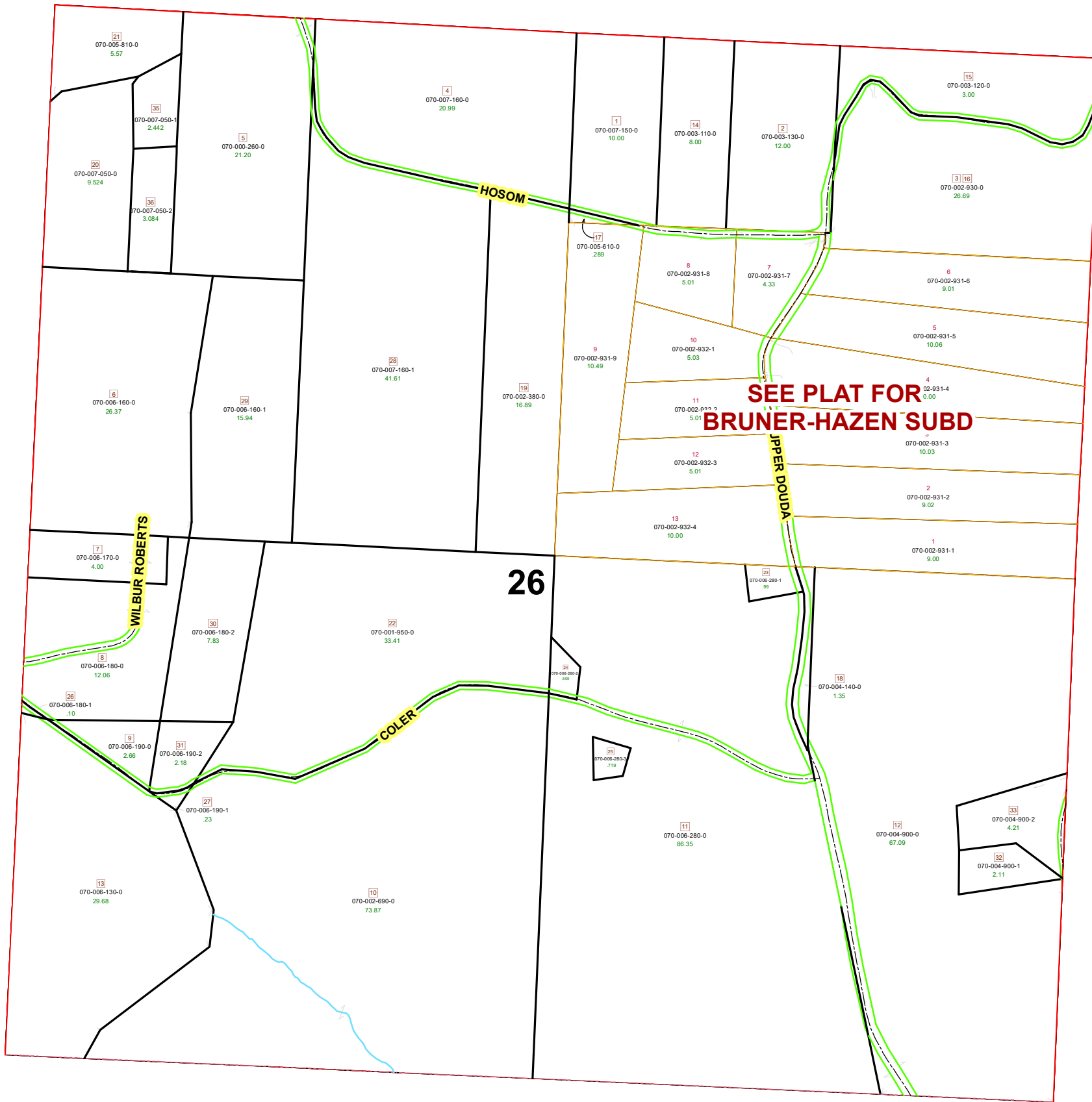


MALTA TOWNSHIP SECTION 26 R-12 TWP-10 MORGAN COUNTY, OH



PIN	VOL	PAG	Owner	LegalDescr	Acres
070-004-900-1	OR29	304	CURRY RODNEY W & PATRICIA E	R12 T10 S26 SD 32	2.116
070-004-900-2	OR29	304	CURRY RODNEY W & PATRICIA E	R12 T10 S26 SD 33	4.21
070-006-280-2	OR208	2964	CURTIS JENNIFER L & TIMOTHY L	R12 T10 S26 SD 24	0.809
070-005-810-0	OR221	458	HALL DEREK	R12 T10 S26 SD 21	5.57
070-002-931-9	OR208	2666	HAMAN JAMES E & JANELLE L	LOT 9 BRUNER-HAZ	10.497
070-005-610-0	OR208	2666	HAMAN JAMES E & JANELLE L	R12 T10 S26 SD 17	0.5
070-002-380-0	OR208	2666	HAMAN JAMES E & JANELLE L	R12 T10 S26 SD 19	16.89
070-004-140-0	OR225	3063	HECTOR JAMES W III & LISA L	R12 T10 S26 SD 18	1.347
070-003-120-0	OR21	502	HIPP LIMITED PARTNERSHIP	R12 T10 S26 SD 15	3
070-003-130-0	OR21	506	HIPP LIMITED PARTNERSHIP	R12 T10 S26 SD 2	12
070-003-110-0	OR21	502	HIPP LIMITED PARTNERSHIP	R12 T10 S26 SD 16	8
070-002-690-0	OR214	476	LAHMERS DANIEL E & AMANDA D	R12 T10 S26 SD 10	73.87
070-001-950-0	OR214	476	LAHMERS DANIEL E & AMANDA D	R12 T10 S26 SD 22	33.41
070-002-930-0	OR122	578	NIERMAN BRIAN E SR & BRIAN E JR	R12 T10 S26 SD 3-1	21.695
070-004-900-0	OR131	532	PETTY HAROLD D	R12 T10 S26 SD 12	67.094
070-007-160-0	OR220	2600	PEYTON TRAVIS M & PAULA ANN	R12 T10 S26 SD 4 S	20.994
070-007-150-0	OR220	2600	PEYTON TRAVIS M & PAULA ANN	R12 T10 S26 SD 1 S	10
070-006-280-0	OR233	1464	ROBERTS ET/AL RICHARD	R12 T10 S26 SD 11	86.353
070-006-280-3	D.V 192	251	ROBERTS RICHARD C	R12 T10 S26 SD 25	0.719
070-006-190-0	OR47	27	ROBERTS STEPHEN E	R12 T10 S26 SD 9	2.665
070-006-180-0	OR47	27	ROBERTS STEPHEN E	R12 T10 S26 SD 8	12.062
070-006-170-0	OR47	27	ROBERTS STEPHEN E	R12 T10 S26 SD 7	4
070-006-160-0	OR47	27	ROBERTS STEPHEN E	R12 T10 S26 SD 6	26.375
070-006-280-1	OR223	3242	SHEPHERD RANDY R & WANDA G	R12 T10 S26 SD 23	0.999
070-007-050-2	OR213	3299	SWANSON DAVID A & MYRA L	R12 T10 S26 SD 36	3.084
070-007-050-1	OR213	3299	SWANSON DAVID A & MYRA L	R12 T10 S26 SD 35	2.442
070-007-050-0	OR213	3299	SWANSON DAVID A & MYRA L	R12 T10 S26 SD 20	9.524
070-006-180-2	OR218	540	VALENTINE AMBER	R12 T10 S26 SD 30	7.833
070-006-160-1	OR218	540	VALENTINE AMBER	R12 T10 S26 SD 29	15.946
070-006-190-2	OR218	540	VALENTINE AMBER	R12 T10 S26 SD 31	2.186
070-007-160-1	OR208	2664	VANOSTER JERRY D JR	R12 T10 S26 SD 28	41.616
070-006-130-0	OR66	717	VEYON JANE FKA JANE WINSTANLEY	R12 T10 S26 SD 13	29.688
070-006-190-1	OR213	2405	VEYON JANE FKA JANE WINSTANLEY	R12 T10 S26 SD 27	0.239
070-000-260-0	OR107	563	ZUMBRO KELLY	R12 T10 S26 SD 5	21.2



Boundaries	
----- Hidden	----- ROW
----- Hydro	----- Section
----- Roads	----- Lot
----- County	----- Township
----- Parcel	----- Parcels



Disclaimer: The information that these maps contains is for reference purposes only. Please bring any errors to the attention of the Engineer's Office staff.

Thank you

